

Micro Deluxe Phantom™

Model ECT/DLX/MMP

Micro Deluxe Cold Rod Insert™

Model ECT/DLX-MMP/I

Main Applications

- Small animal system evaluation (with field-of-view greater than 45 mm and under 77 mm)
- Evaluation of ultra-high resolution ECT systems (less than or equal to 3 mm FWHM)
- Spatial resolution measurements
- Evaluation of center-of-rotation error
- Research

Specifications

All clear material: PMMA

Rod diameters: 1.2, 1.6, 2.4, 3.2, 4.0 and 4.8 mm

Rod spacing: Center-to-center rod spacing is equal to twice the rod diameter for any given sector. For example, the center-to-center spacing is 8.0 with the 4.0 mm diameter rods.

Height of rods: ~ 34 mm

Insert diameter: ~ 43 mm

Cylinder outside diameter: ~ 51 mm

Cylinder outside height: ~ 76 mm

Cylinder inside diameter: ~ 45 mm

Cylinder inside height: ~ 36 mm

Shipping

Carton: 10" x 8" x 4"

Weight: 3lbs.

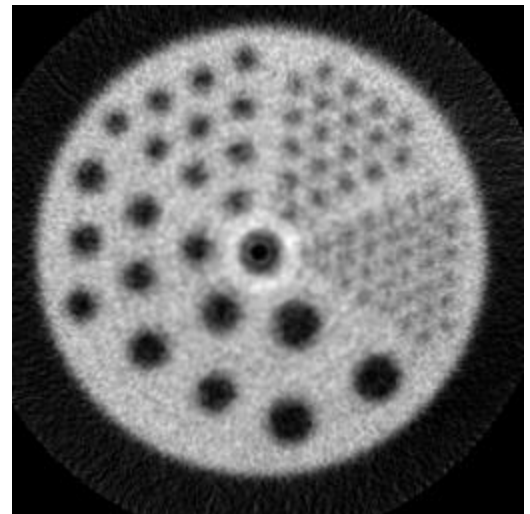


Image of Micro Deluxe Cold Rod Phantom™



Components of Micro Deluxe Phantom™



Micro Deluxe Phantom™